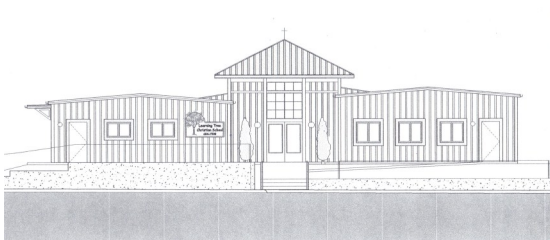


Learning Tree Christian School
Class of 2011

Here's an opportunity for YOU to make a difference in our community! The Learning Tree School has been making a difference for over 30 years. We are a non-profit organization dedicated to providing children with the best possible start in their educational experience.



LEARNING TREE CHRISTIAN SCHOOL
ADDITION

Why are we raising funds?

- To complete Phase 2 of our school building project
- To secure longevity of Learning Tree for many years to come
- To provide for a growing enrollment
- To make Learning Tree available for all Johnson County's youth
- To enhance learning in the classroom
- To accommodate children with special needs

Fundraising Brick Order Form

To order a brick or make a tax-deduction donation, complete the form below and return with payment to:

Friends of Learning Tree Christian School
820 W. Fetterman
Buffalo, WY 82834

learningtreechristianschool@gmail.com
Website: www.wyolearningtree.org

Donor Name: _____

Address _____

City _____ State: _____ Zip: _____

Day Phone: _____

Cell Phone: _____

Email: _____

Brick Size 4"x 8"

Number of Bricks _____ x \$150 = \$ _____

Brick Size 8"x 8"

Number of Bricks _____ x \$500 = \$ _____

Brick Size 12"x 12"

Number of Bricks _____ x \$1000 = \$ _____

(Complimentary Learning Tree logo)

Please use the next side of this form to specify name and/or message you would like inscribed on your brick. If you would like to place additional orders, please enclose an extra form for each order.

Limited Time Opportunity ends May 1, 2012
LT "Wall of Fame" completed Fall 2012

4" x 8" Brick
2 Lines \$150

8" x 8" Brick
4 Lines \$500

12" x 12" Brick
5 Lines \$1,000

For more information go to www.wyolearningtree.org

Engraving Information
18 characters per line



What we do:

The Learning Tree Christian School program is based upon the understanding that each child is a unique child of God. We work with children as individuals to help them develop skills, interests, and concepts when they are ready to undertake them. Children are learning when they communicate, develop concepts, use problem solving abilities, show self-reliance and explore. We focus on the “whole child,” incorporating all areas of development into daily lesson plans.



Learning Tree Christian School

820 W. Fetterman
 Buffalo, WY 82834
 (307) 684-7509



**Be a Part of
 Learning Tree
 “Wall of Fame”**

<p>GREEN DENTISTRY WE SUPPORT OUR SCHOOLS AND OUR COMMUNITY</p>	<p>Serving Each Other Serves God and Man The Vogels</p>
<p>DREAM IT, BELIEVE IT, ACHIEVE IT! WITH LOVE, THE MARC FAMILY</p>	<p>John, Aliee, Mike, Nick, James, Kinnley, Mary, Jennifer, William, Ray 1990</p>
<p>John and Charlie Wren 1985-1990</p>	<p>John, We Will Never Forget You</p>